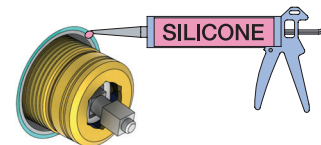


Do not cut the membrane  
 Die Membran nicht schneiden  
 Skær ikke membranen  
 \* Skär inte membranet  
 Snij het membraan niet door  
 Ne coupez pas la membrane  
 No cortar la membrana



\*Membran används inte i SVERIGE,  
 ihop med inbyggnadsboxen.

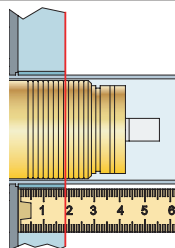
NR.21:

1

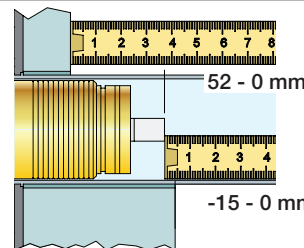
NR.28+19+24:

2

Förlängning  
 Verlängerung  
 Fortlængelse



| VR2260/VR1400/VR2019 |            |      |
|----------------------|------------|------|
|                      | 3 - 15 mm  | Std. |
| Tiles:               | 15 - 25 mm | +10  |
| Fliesen:             | 25 - 35 mm | +20  |
| Fliser:              | 35 - 45 mm | +30  |
| Tegels:              | 45 - 55 mm | +40  |
| Carreaux:            | 55 - 65 mm | +50  |

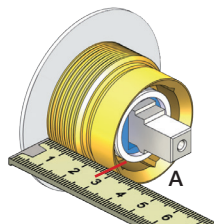


| VR2260/VR1400/VR2019 |            |      |
|----------------------|------------|------|
|                      | 35 - 47 mm | Std. |
|                      | 25 - 35 mm | +10  |
|                      | 15 - 25 mm | +20  |
|                      | 5 - 15 mm  | +30  |
|                      | -5 - 5 mm  | +40  |
|                      | -15 - 5 mm | +50  |

NR 21

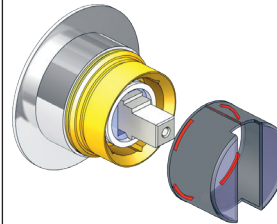


NR 21 - 1

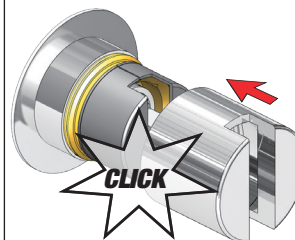


|         |       | A          |
|---------|-------|------------|
| VR2279  | 16 mm | 30 - 34 mm |
| VR2279B | 12 mm | 26 - 30 mm |
| VR2279C | 8 mm  | 22 - 26 mm |

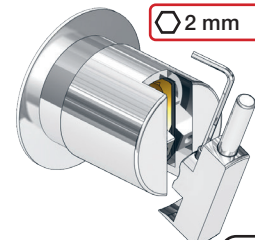
NR 21 - 2



NR 21 - 3



NR 21 - 4





| VR1260/VR1400/VR2019          |            |      |
|-------------------------------|------------|------|
| Tegels:<br>Carreaux:          | 3 - 15 mm  | Std. |
|                               | 15 - 25 mm | +10  |
|                               | 25 - 35 mm | +20  |
|                               | 35 - 45 mm | +30  |
| Tiles:<br>Fliesen:<br>Fliser: | 45 - 55 mm | +40  |
|                               | 55 - 65 mm | +50  |



| VR1260/VR1400/VR2019 |      |  |
|----------------------|------|--|
| 40 - 52 mm           | Std. |  |
| 30 - 40 mm           | +10  |  |
| 20 - 30 mm           | +20  |  |
| 10 - 20 mm           | +30  |  |
| 0 - 10 mm            | +40  |  |
| -10 - 0 mm           | +50  |  |

NR 19/NR24

NR 19:  
 Ø40 mm  
 Ø1 5/8"

NR 24:  
 Ø43 mm  
 Ø1 3/4"



NR 28 - 1

VR3279 VR3279B VR3279C

|         | A     |            |
|---------|-------|------------|
| VR3279  | 16 mm | 31 - 36 mm |
| VR3279B | 12 mm | 27 - 32 mm |
| VR3279C | 8 mm  | 23 - 28 mm |



NR 19 - 1  
NR 24 - 1

VR2204 VR2204B VR2204C

NR 19 - VR665

|         | A     |            |
|---------|-------|------------|
| VR665   | 16 mm | ALL        |
| VR2204  | 16 mm | 16 - 21 mm |
| VR2204B | 12 mm | 11 - 17 mm |
| VR2204C | 8 mm  | 7 - 13 mm  |

